



HOSE & TUBING

hose \`hōz \`n : a flexible tube for conveying gases or fluids

tubing \`t(y)u-bing \`n : a stiff material in the form of a tube used for conveying gases or fluids

Do you use a garden tube?

The answer to the question of whether to call it a tube or a hose rests on a fine line, one many people have gotten tangled up in. In both definitions it clearly states that a tube and a hose are used for conveying fluids, yet sometimes one word seems to fit the situation (and the application) better than the other. So remember...

It's a hose when it's flexible and a tube when it's not.

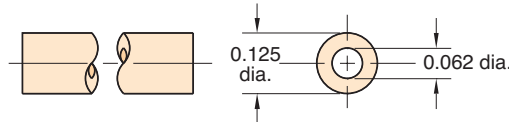
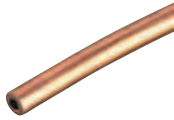
Clippard offers a variety of miniature hose and tubing from copper and nylon tubing to flexible urethane, vinyl and Buna-N hose. The chart below lists these products and their available colors and lengths.



	□	-	□	-	□	-	□	
Hose or Tubing Type							Available Lengths	
NYT1 - Single Nylon Tubing							050 - 50' Roll	
VYH1 - Single Vinyl Hose							500 - 500' Spool	
VYH2 - Dual Vinyl Hose								
URH1 - Single 85 Duro. Polyurethane Hose								
URH2 - Dual 85 Duro. Polyurethane Hose								
URH8 - Ribbon 85 Duro. Polyurethane Hose								
URT1 - Single 95 Duro. Polyurethane Tubing								
PET1 - Single Polyethylene Tubing								
	Size: O.D. x I.D.		Colors: Solid		Translucent			
	0402 - 1/8" x 1/16"		BLS - Blue		BLT - Blue			
	0403 - 1/8" x 3/32"		BKS - Black		CLT - Clear			
	0503 - 5/32" x 3/32"		BRS - Brown		GNT - Green			
	0804 - 1/4" x 1/8"		GNS - Green		PUT - Purple			
	0805 - 1/4" x 0.160"		GYS - Gray		ORT - Orange			
	1208 - 3/8" x 1/4"		NAS - Natural		RDT - Red			
	1610 - 1/2" x 0.320"		ORS - Orange		YLT - Yellow			
	Metric Sizes		WHS - White		02T - BLT/GNT/GYS/ORT/ PUT/RDT/WHS/YLT (ribbon only)			
	0604M - 6 mm x 4 mm		YLS - Yellow					
	0805M - 8 mm x 5 mm		01S - Gray/Black (dual only)					

This chart is to be used as an explanation of our ordering system. See individual listings following this page for sizes and colors available.

1/8" O.D. Copper Tubing



Part No. Description
[3811-1-RL](#) Copper Tubing

Material: High pressure copper

Working Pressures: to 2,500 psig

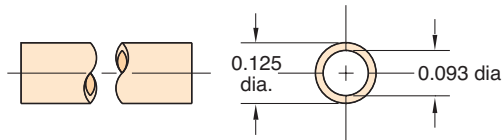
Static Burst Pressure: over 10,000 psig

Lengths Available: 50'

Bend Radius: 3/8"

Use With: Ferrule tubing connectors: [3810-1](#), [3810-2](#), [11923](#)

3/32" I.D. Nylon Tubing



Part No.
[NYT1-0403-CLT](#) □

Material: Semi-flexible nylon tubing

Color: Clear / Translucent

Working Range: to 250 psig

Static Burst Pressure: Approx. 1,000 psig

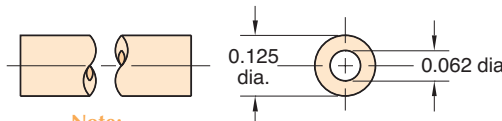
Use With: Ferrule tubing connectors: [11923](#), [3810-1](#), [3810-2](#)

Forming: May be formed into sharp corners with heat

Lengths Available: 50' and 500'

Bend Radius: 3/8"

1/16" I.D. 80A Vinyl Hose



Part No.
[VYH1-0402-CLT](#) □

Note:
 Consult factory for custom colors

Type: Flexible, durable vinyl plastic hose

Working Range: 0 to 105 psig at 70°F maximum 60 psig at 80°F or above (max. temp. 100°F)

Use With: Hose fittings: [11752-2](#) and clamp [5000-4](#)

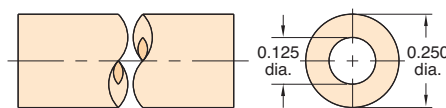
Bend Radius: 3x hose dia.

Color: Translucent: Clear

Lengths Available: 50' and 500'

Bend Radius: 3/8"

1/8" I.D. 80A Vinyl Hose



Part No.
[VYH1-0804-CLT](#) □

Note:
 Consult factory for custom colors

Working Range: 0 to 105 psig at 70°F maximum 60 psig at 80°F or above (max. temp. 100°F)

Use With: Hose fittings: [11752-1](#), [11752-3](#) and [11924](#)
 Hose clamps: [5000-2](#)

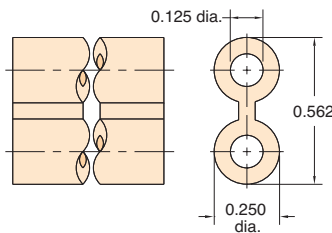
Bend Radius: 3x hose dia.

Color: Translucent: Clear

Lengths Available: 50' and 500'

Bend Radius: 1/2"

1/8" I.D. Twin Vinyl Hose



Part No.
[VYH2-0804-GYS](#) □

Type: Flexible, durable vinyl plastic hose, but two hoses molded together, one side has rib entire length for identification

Color: Solid: Gray/Gray

Use Clamp: [5000-1](#)

Working Range: 0 to 150 psig at 70°F maximum 60 psig at 80°F or above (max. temp. 100°F)

Use: Ideal for feeding supply in on one line and out on the other, reduces labor; makes neat assembly; may be parted with any sharp cutting edge

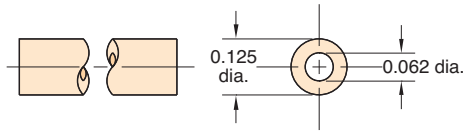
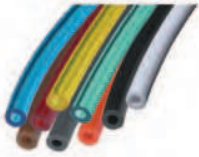
Lengths Available: 50' and 500'

Bend Radius: 1/2"



HOSE & TUBING

1/16" I.D. 85A Polyurethane Hose



Working Range: 0 to 105 psig at 100°F Maximum 120°F
Static Burst Pressure: Over 500 psig at 70°F
Color: Solid: Black, brown, white, gray, orange
 Translucent: Clear, blue, green, red, yellow
Lengths Available: 50' and 500'
Bend Radius: 3/16"
Note: In normal application hose clamps are not required with hose when used with Clippard hose barb fittings

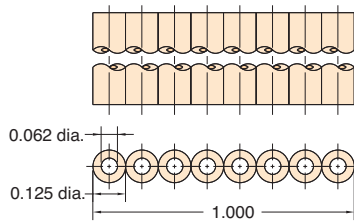
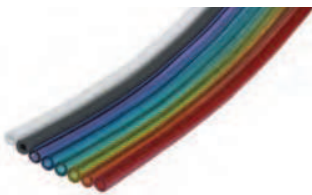
Part No.

URH1-0402-□-□

Note:

Specify color on order, and use full product number (including code letters for color) as shown in Price List. If no color is specified, clear will be furnished.

1/16" I.D. 85A Polyurethane Ribbon Hose

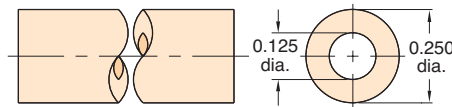


Type: Flexible, durable urethane hose
Working Range: 0 to 105 psig at 100°F maximum 120°F
Static Burst Pressure: Over 500 psig at 70°F
Color: Solid: Gray, white
 Translucent: Blue, green, orange, purple, red, yellow
Lengths Available: 50'
Bend Radius: 3/16"
Note: In normal application, hose clamps are not required with hose when used with Clippard hose barb fittings

Part No.

URH8-0402-02T-050

1/8" I.D. 85A Polyurethane Hose



Working Range: 0 to 105 psig at 100°F Maximum 120°F
Static Burst Pressure: Approximately 425 psig at 70°F
Color: Solid: Black, brown, white, gray, orange
 Translucent: Clear, blue, green, red, yellow
Lengths Available: 50' and 500'
Bend Radius: 3/8"
Note: In normal application hose clamps are not required with hose when used with Clippard hose barb fittings

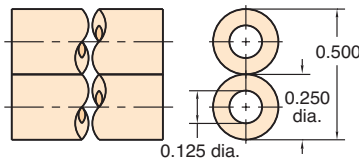
Part No.

URH1-0804-□-□

Note:

Specify color on order, and use full product number (including code letters for color) as shown in Price List. If no color is specified, clear will be furnished.

Twin 1/8" I.D. 85A Polyurethane Hose

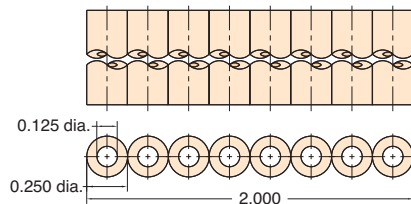
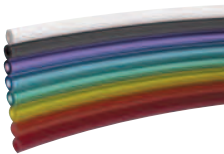


Working Range: 0 to 105 psig at 100°F
Static Burst Pressure: Approximately 425 psig at 70°F
Color: Solid: Gray and black combination
Lengths Available: 50' and 500'
Bend Radius: 3/8"
Use: Ideal for feeding supply in on one line and out on the other; reduces labor; makes neat assembly; may be parted with any sharp cutting edge
Note: In normal application, hose clamps are not required with URH2-0804-01S hose when used with Clippard hose barb fittings

Part No.

URH2-0804-01S-□

1/8" I.D. 85A Polyurethane Ribbon Hose



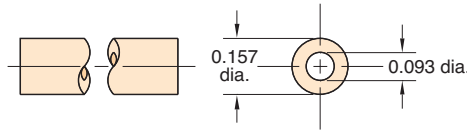
Type: Flexible, durable urethane hose
Working Range: 0 to 105 psig at 100°F maximum 120°F
Static Burst Pressure: Over 500 psig at 70°F
Color: Solid: Gray, white
 Translucent: Blue, green, orange, purple, red, yellow
Lengths Available: 50'
Bend Radius: 3/8"
Note: In normal application, hose clamps are not required with hose when used with Clippard hose barb fittings

Part No.

URH8-0804-02T-050

5/32" O.D. 95A Polyurethane Tubing

Flexible, durable ether based tubing



Working Range: 0 to 105 psig at 100°F Maximum 120°F

Static Burst Pressure: Over 500 psig at 70°F

Color: Solid: Black, gray, orange, red, white
Translucent: Blue, clear, green, red, yellow

Lengths Available: 50' and 500'

Bend Radius: 3/8"

Note: Designed for use with push-in fittings.

Part No.

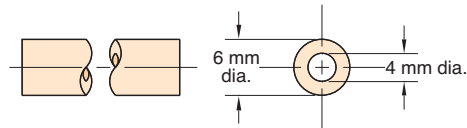
URT1-0503-□-□

Note:

Specify color on order, and use full product number (including code letters for color) as shown in Price List. If no color is specified, clear will be furnished.

6 mm O.D. 95A Polyurethane Tubing

Flexible, durable ether based tubing



Working Range: 0 to 105 psig at 100°F Maximum 120°F

Static Burst Pressure: Over 450 psig at 70°F

Color: Solid: Black
Translucent: Blue, clear, green, red

Lengths Available: 50' and 500'

Bend Radius: 1/2"

Note: Designed for use with push-in fittings.

Part No.

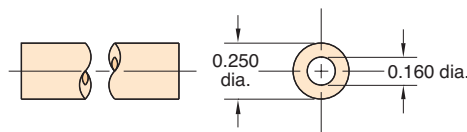
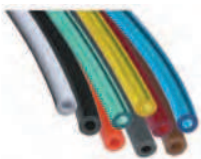
URT1-0604M-□-□

Note:

Specify color on order, and use full product number (including code letters for color) as shown in Price List. If no color is specified, clear will be furnished.

1/4" O.D. 95A Polyurethane Tubing

Flexible, durable ether based tubing



Working Range: 0 to 105 psig at 100°F Maximum 120°F

Static Burst Pressure: Over 450 psig at 70°F

Color: Solid: Black, gray, orange, red, white
Translucent: Blue, clear, green, red, yellow

Lengths Available: 50' and 500'

Bend Radius: 1/2"

Note: Designed for use with push-in fittings.

Part No.

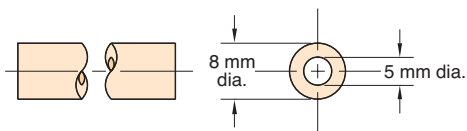
URT1-0805-□-□

Note:

Specify color on order, and use full product number (including code letters for color) as shown in Price List. If no color is specified, clear will be furnished.

8 mm O.D. 95A Polyurethane Tubing

Flexible, durable ether based tubing



Working Range: 0 to 105 psig at 100°F Maximum 120°F

Static Burst Pressure: Over 465 psig at 75°F

Color: Clear

Lengths Available: 50' and 500'

Bend Radius: 3/4"

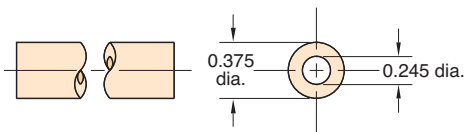
Note: Designed for use with push-in fittings.

Part No.

URT1-0805M-CLT-□

3/8" O.D. 95A Polyurethane Tubing

Flexible, durable ether based tubing



Working Range: 0 to 105 psig at 100°F Maximum 120°F

Static Burst Pressure: Over 440 psig at 75°F

Color: Solid: Black
Translucent: Blue, clear, green, red

Lengths Available: 50' and 500'

Bend Radius: 7/8"

Note: Designed for use with push-in fittings.

Part No.

URT1-1208-□-□

Note:

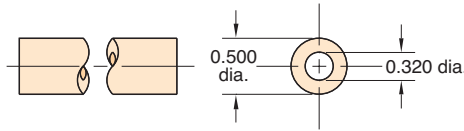
Specify color on order, and use full product number (including code letters for color) as shown in Price List. If no color is specified, clear will be furnished.



HOSE & TUBING

1/2" O.D. 95A Polyurethane Tubing

Flexible, durable ether based tubing



Working Range: 0 to 105 psig at 100°F Maximum 120°F

Static Burst Pressure: Over 420 psig at 75°F

Color: Clear

Lengths Available: 50' and 250'

Bend Radius: 1 1/8"

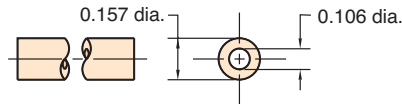
Note: Designed for use with push-in fittings.

Part No.

URT1-1610-CLT-□

5/32" O.D. 50D Polyethylene Tubing

Linear low density tubing



Working Range: 0 to 105 psig at 100°F Maximum 120°F

Static Burst Pressure: Over 540 psig at 75°F

Colors: Solid: Black or Natural

Lengths Available: 50' and 500'

Bend Radius: 1/2"

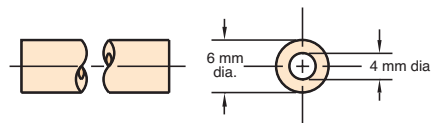
Note: Designed for use with push-in fittings.

Part No.

PET1-0503-□-□

6 mm O.D. 50D Polyethylene Tubing

Linear low density tubing



Working Range: 0 to 105 psig at 100°F Maximum 120°F

Static Burst Pressure: Approximately 560 psig at 75°F

Colors: Solid: Black or Natural

Lengths Available: 50' and 500'

Bend Radius: 1 1/4"

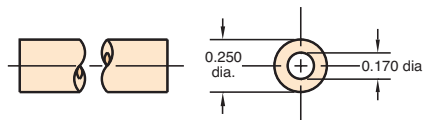
Note: Designed for use with push-in fittings.

Part No.

PET1-0604M-□-□

1/4" O.D. 50D Polyethylene Tubing

Linear low density tubing



Working Range: 0 to 105 psig at 100°F Maximum 120°F

Static Burst Pressure: Approximately 480 psig at 75°F

Colors: Solid: Black or Natural

Lengths Available: 50' and 500'

Bend Radius: 1 1/4"

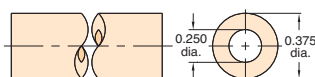
Note: Designed for use with push-in fittings.

Part No.

PET1-0805-□-□

3/8" O.D. 50D Polyethylene Tubing

Linear low density tubing



Working Range: 0 to 105 psig at 100°F Maximum 120°F

Static Burst Pressure: Approximately 600 psig at 75°F

Colors: Solid: Black or Natural

Lengths Available: 50' and 500'

Bend Radius: 2"

Note: Designed for use with push-in fittings.

Part No.

PET1-1208-□-□

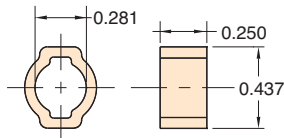
Note:

Specify color on order, and use full product number (including code letters for color) as shown in Price List. If no color is specified, natural will be furnished.

Quick Set Hose Clamp



Type: Zinc plated steel
Use: 5000-1 with twin vinyl hose

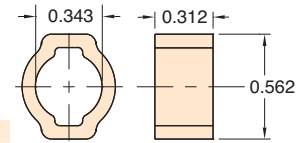


Part No. 5000-1 **Description**
Hose Clamp

Quick Set Hose Clamp

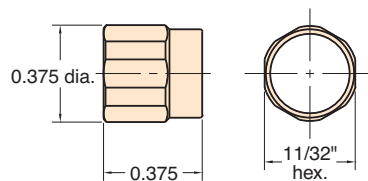


Type: Zinc plated steel



Part No. 5000-1A **Description**
Hose Clamp

Reusable Hose Clamp



Part No. 5000-2 **Description**
Hose Clamp

Material: Brass, self-threading, reusable

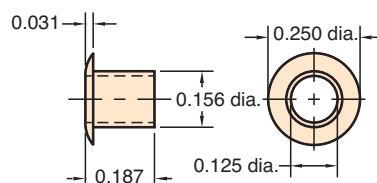
Use With: 11765 Buna-N hose VYH1-0804-CLT vinyl hose and Clippard hose fittings

Installation: Slip sleeve over hose, push onto fitting, then screw into place; tighten with wrench

Options: (-ENP)



Press-On Hose Clamp



Part No. 5000-4 **Description**
Hose Clamp

Material: Brass, press-on hose clamp

Use: for VYH1-0402-CLT hose 1/16" I.D. vinyl

Installation: Simply place hose clamp over hose with flange end out; then press hose partially onto fitting, then slide clamp back toward fitting to secure

Options: (-ENP)



Polyethylene vs Vinyl vs. Polyurethane

Polyurethane offers a wider range of chemical compatibility than Vinyl, it may be used at much higher temperatures and clamps are not needed when used with barb fittings. Linear low density polyethylene offers a lower cost alternative to polyurethane and superior environmental stress crack resistance over standard polyethylene. Both polyurethane and polyethylene are FDA approved.

Typical Hose & Tubing Bend Radii

When using hose or tubing, care should always be taken to avoid sharp bends to prevent compressing the inside diameter of the hose or tubing and restricting flow. For extremely close connections, allow a short loop of hose to avoid crimping.

Clippard Hose & Tubing		I.D.	O.D.	Min. Bend Radius
3811-1-RL	Copper Tube	1/16"	1/8"	3/8"
NYT1-XXX	Nylon Tubing	3/32"	1/8"	3/8"
VYH1-XXX	80A Duro. Vinyl Hose	1/16"	1/8"	3/8"
VYH1-XXX	80A Duro. Vinyl Hose	1/8"	1/4"	1/2"
VYH2-XXX	Dual Vinyl Hose	1/8"	1/4"	1/2"
URH1-XXX	85A Duro. Polyurethane Hose	1/16"	1/8"	3/16"
URH8-XXX	Ribbon 85A Duro. Polyurethane	1/16"	1/8"	3/16"
URH1-XXX	85A Duro. Polyurethane Hose	1/8"	1/4"	3/8"
URH2-XXX	Dual 85A Duro. Polyurethane	1/8"	1/4"	3/8"
URH8-0804-XXX	Ribbon 85A Duro. Polyurethane	1/8"	1/4"	3/8"
URT1-0503-XXX	95A Duro. Polyurethane Tubing	3/32"	5/32"	3/8"
URT1-0604M-XXX	95A Duro. Polyurethane Tubing	4 mm	6 mm	1/2"
URT1-0805-XXX	95A Duro. Polyurethane Tubing	0.160"	1/4"	1/2"
URT1-0805M-CLT	95A Duro. Polyurethane Tubing	5 mm	8 mm	3/4"
URT1-1208-XXX	95A Duro. Polyurethane Tubing	0.245"	3/8"	7/8"
URT1-1610-XXX	95A Duro. Polyurethane Tubing	0.320"	1/2"	1 1/8"
PET1-0503-XXX	50D Duro. Polyethylene Tubing	0.106"	5/32"	1/2"
PET1-0604M-XXX	50D Duro. Polyethylene Tubing	4 mm	6 mm	1 1/4"
PET1-0805-XXX	50D Duro. Polyethylene Tubing	0.170"	1/4"	1 1/4"
PET1-1208-XXX	50D Duro. Polyethylene Tubing	1/4"	3/8"	2"