

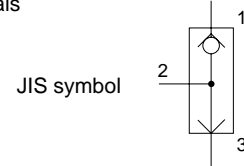
Shuttle valve SHV2 Series

New Product



Features

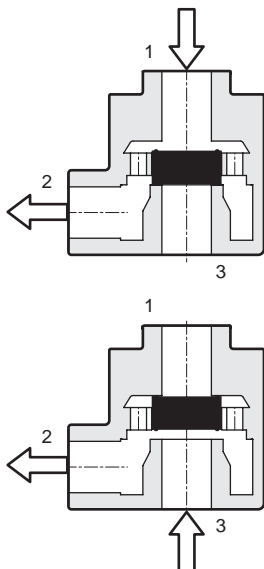
- **Port size variation**
Port sizes; Rc1/8 to Rc1 are available.
- **Various options**
 - Fluoro rubber specifications joined in option
 - Mounting bracket is available (small bore size type)
- **Considerate of environment**
 - Lead and hexavalent chrome-free ecological design
 - Painting free
 - Easy sorting materials



Specifications

Model no.	SHV2-6	SHV2-8	SHV2-10	SHV2-15	SHV2-20	SHV2-25	
Descriptions							
Working fluid	MPa Compressed air						
Max. working pressure	MPa 1.0						
Min. working pressure	MPa 0.05						
Withstanding pressure	°C 1.5						
Fluid temperature range	°C 5 to 60						
Ambient temperature range	0 to 60 (no freezing)						
Port size	Rc 1/8	Rc 1/4	Rc 3/8	Rc 1/2	Rc 3/4	Rc 1	
Product weight	g 86	g 82	g 270	g 270	g 760	g 700	
Mounting attitude	Free						
Effective sectional area	mm ² 1 to 2	25	35	90	105	205	245
	mm ² 3 to 2	28	40	95	115	210	250

Operational explanation

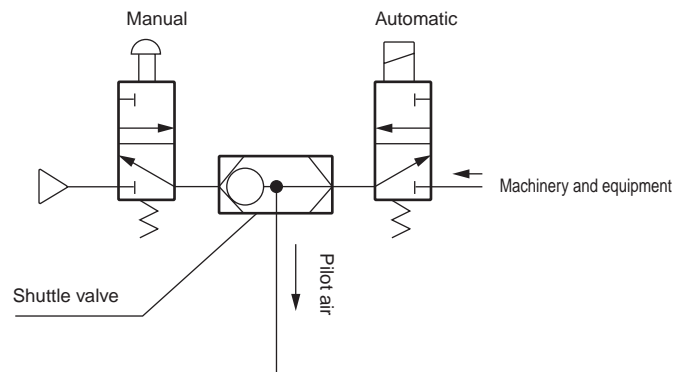


● **1 to 2**
The pressure from port 1 of the valve results in the close of port 3, and air flows to port 2.

● **3 to 2**
The pressure from port 3 results in the close of port 1, and air flows to port 2.

Applications

(1) Switchover between manual and automatic



⚠ Refer to the "safety precautions" on the back before operating.

CKD Corporation

CC-777A

SHV2 Series

How to order

● Shuttle valve

SHV2 - **6** - **A** **P**

Model no.

A Port size

B Option

C Accessory

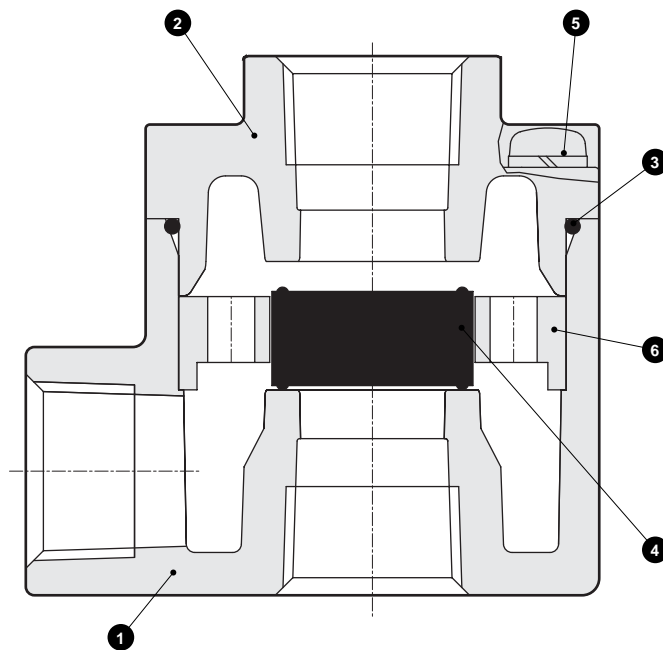
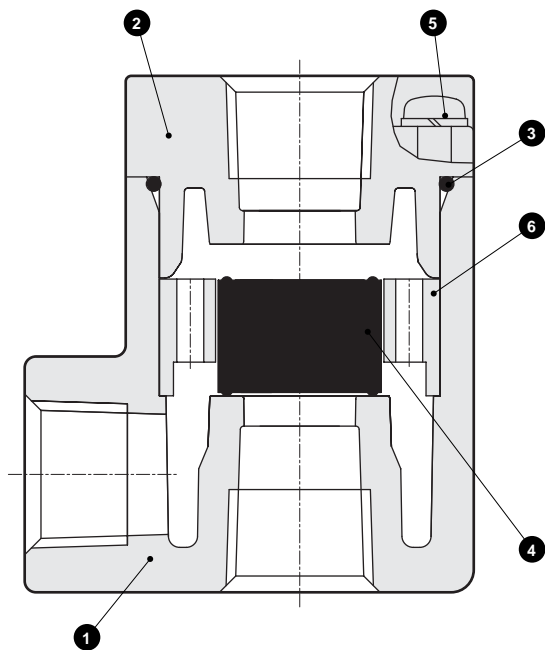
Symbol	Descriptions
A Port size	
6	Rc 1/8
8	Rc 1/4
10	Rc 3/8
15	Rc 1/2
20	Rc 3/4
25	Rc 1
B Option	
Blank	No option
A	Fluoro rubber specifications
C Accessory	
Blank	None
P	Mounting bracket attached

Note 1: The Mounting bracket attachment comes with SHV2-6 and SHV2-8.

Internal structure and parts list

● SHV2-6/8

● SHV2-10/15/20/25

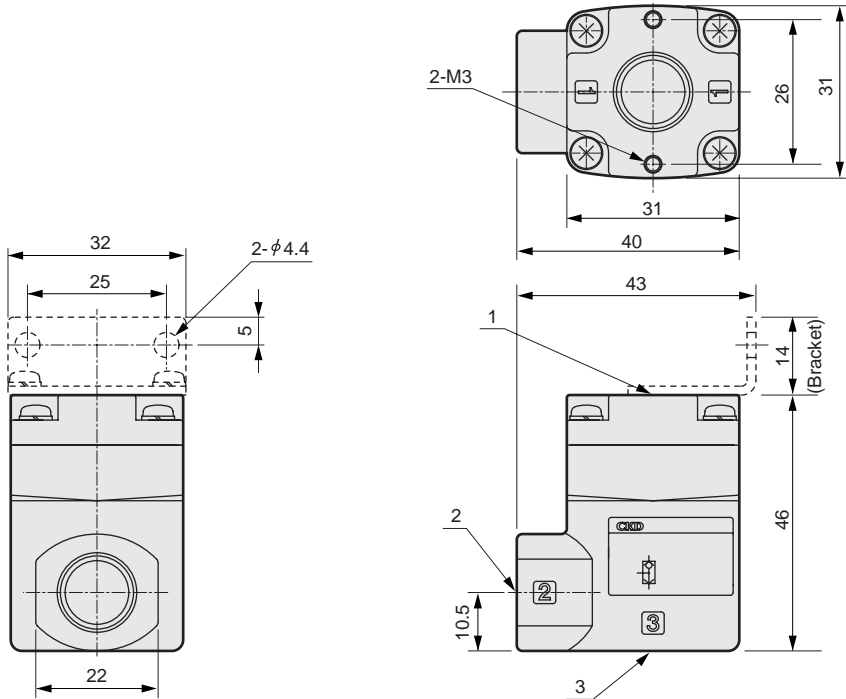


No.	Parts name	Material
1	Body	Aluminum alloy die-casting
2	Plug	Aluminum alloy die-casting
3	O ring	Nitrile rubber (fluoro rubber)
4	Valve	Nitrile rubber (fluoro rubber)
5	Cross headed pan screw with SW	Stainless steel
6	Guide ring	Aluminum alloy

* The value in () is for the option "A" (fluoro rubber specifications).

Dimensions

● SHV2-6/8

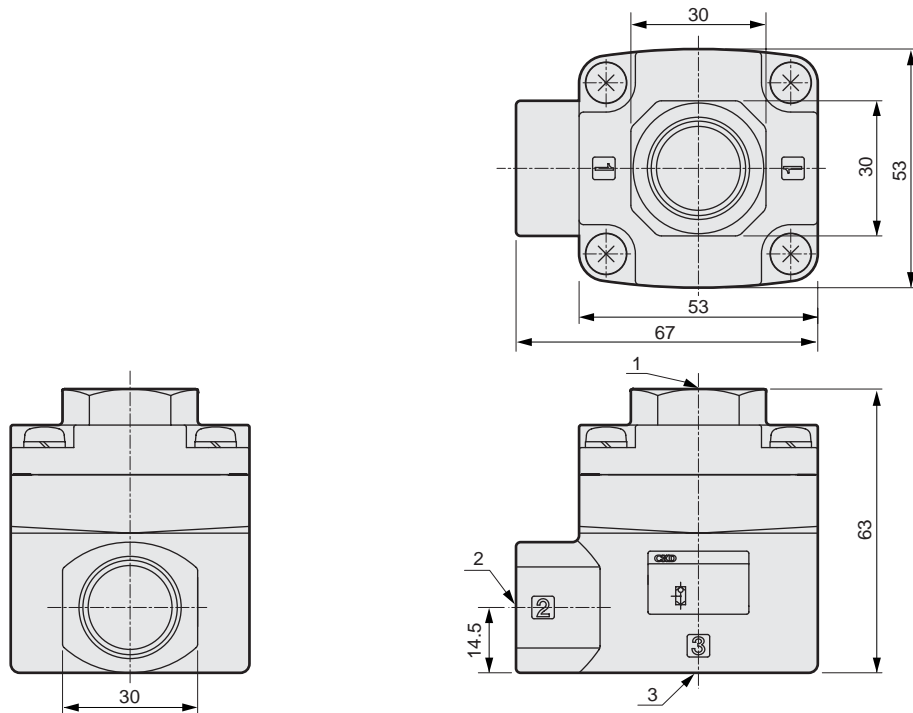


Model no.	Port position		
	1	2	3
SHV2-6		Rc 1/8	
SHV2-8		Rc 1/4	

(Piping port indication)

Port symbol	Descriptions
1	A (input)
2	OUT (output)
3	B (input)

● SHV2-10/15



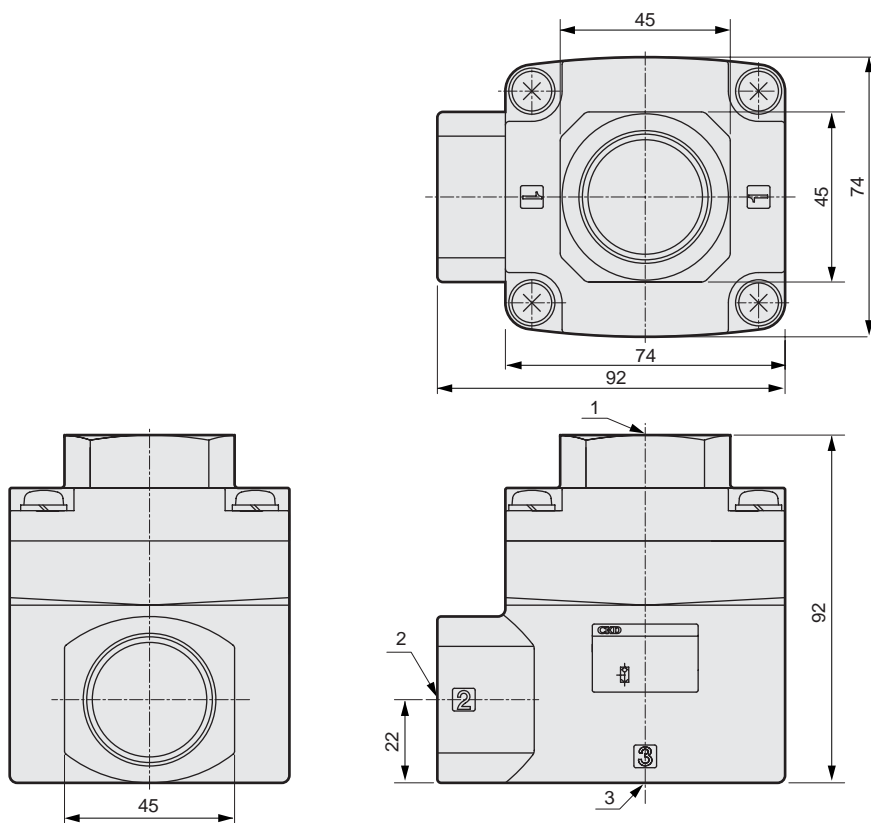
Model no.	Port position		
	1	2	3
SHV2-10		Rc 3/8	
SHV2-15		Rc 1/2	

(Piping port indication)

Port symbol	Descriptions
1	A (input)
2	OUT (output)
3	B (input)

Dimensions

● SHV2-20/25



(Piping port indication)

Model no.	Port position		
	1	2	3
SHV2-20		Rc 3/4	
SHV2-25		Rc 1	

Port symbol	Descriptions
1	A (input)
2	OUT (output)
3	B (input)

! Refer to the "safety precautions" in catalog [Pneumatic, vacuum, auxiliary components (No. CB-24SA)] as well.

Design & Selection

- This valve can not be used as a stop valve that has no leakage. Due to its property, this product has some leakage.
- Although free installation attitude, the operation could be slow with low pressure differential (0.05 MPa or less).

Installation & Adjustment

- Apply with recommended tightening torque when connecting pipes to prevent damage of screw and air leakage.
 - Tighten by hand first, then use a tool to prevent damage on screw thread.
 - Do not tighten screws as applying pressure.
- Install an air filter just before the pneumatic component in the circuit.

(Recommended tightening torque)

	Tightening torque N·m
Rc 1/8	3 to 5
Rc 1/4	6 to 8
Rc 3/8	13 to 15
Rc 1/2	16 to 18
Rc 3/4	19 to 40
Rc 1	41 to 70

During Use & Maintenance

- Stop applying air and make sure of no residual pressure when replacing tube.

本製品及び関連技術を輸出される場合は、兵器・武器関連用途に使用されるおそれのないよう、ご注意ください。
If the goods and their replicas, or the technology and software in this catalog are to be exported, laws require the exporter to make sure they will never be used for the development or the manufacture of weapons for mass destruction.

CKD Corporation

< Website >
<http://www.ckd.co.jp/>

本社・工場 〒485-8551 愛知県小牧市応時2-250
 営業本部 〒485-8551 愛知県小牧市応時2-250
 Overseas Sales dept. 2-250 Uji Komaki, Aichi 485-8551, Japan
 東京支店 〒105-0013 東京都港区浜松町1-31-1(文化放送メディアプラス4階)
 名古屋支店 〒485-8551 愛知県小牧市応時2-250
 大阪支店 〒550-0001 大阪市西区土佐堀1-3-20

TEL(0568)77-1111 FAX(0568)77-1123
 TEL(0568)74-1303 FAX(0568)77-3410
 TEL(0568)74-1338 FAX(0568)77-3461
 TEL(03)5402-3620 FAX(03)5402-0120
 TEL(0568)74-1356 FAX(0568)77-3317
 TEL(06)6459-5770 FAX(06)6446-1945