

MLL800



► Largest compressed-air driven pump in the market

Supplied with built-in silencer, on-off valve, vacuum gauge and pilot control facility.

TECHNICAL DATA

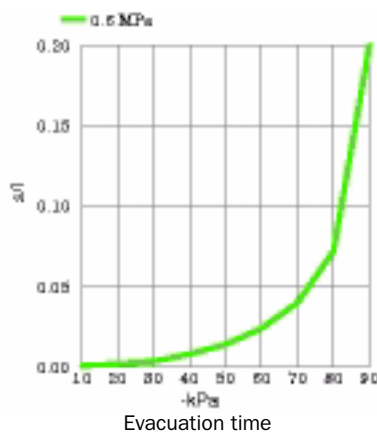
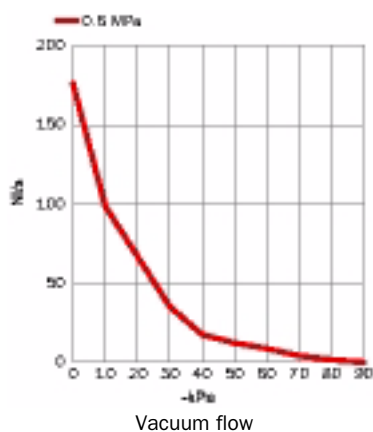
Description	Unit	Value
Feed pressure, max.	MPa	0.7
Noise level	dBA	72-76
Temperature range	°C	-20-80
Weight	g	7700-8400
Material		Al, PPS, NBR, SS

VACUUM FLOW

Feed pressure MPa	Air consumption NI/s	Vacuum flow (NI/s) at different vacuum levels (-kPa)										Max vacuum -kPa
		0	10	20	30	40	50	60	70	80	90	
0.60	56	176	99	67	35	17.6	12.3	8.8	4.2	1.8	0.040	91

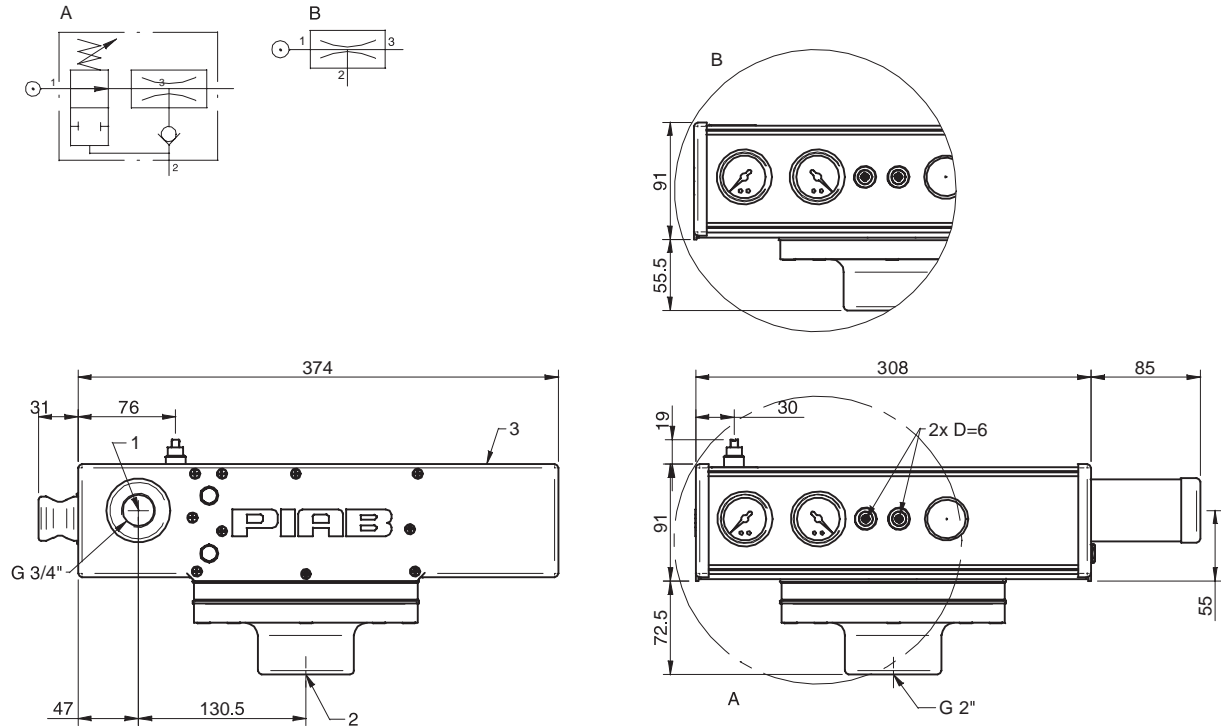
EVACUATION TIME

Feed pressure MPa	Air consumption NI/s	Evacuation time (s/l) to reach different vacuum levels (-kPa)										Max vacuum -kPa
		10	20	30	40	50	60	70	80	90		
0.60	56	0.0008	0.0018	0.0035	0.008	0.014	0.024	0.040	0.072	0.2	91	



ORDERING INFORMATION

Description	Art. No.
A Vacuum pump MAXI MLL800, NBR sealings, ES	0100743
B Vacuum pump MAXI MLL800, NBR sealings	3101058



Vacuum pumps
MAXI

ORDERING INFORMATION, ACCESSORIES

Description	Art. No.
Sealing kit MAXI MLL800, NBR	3101092
Sealing kit MAXI MLL800, Viton®	3101092V
Sealing kit MAXI MLL800, EPDM	3101092E

The sealing kits include flap valves and gaskets.