

VACUUM FILTERS



- ▶ To filter dust and other small particles from the vacuum flow.
- ▶ Reduces the risk of operation breakdown or stoppage in the pump.
- ▶ Replaceable filter element.
- ▶ Available with special filter element with increased filter area

TECHNICAL DATA

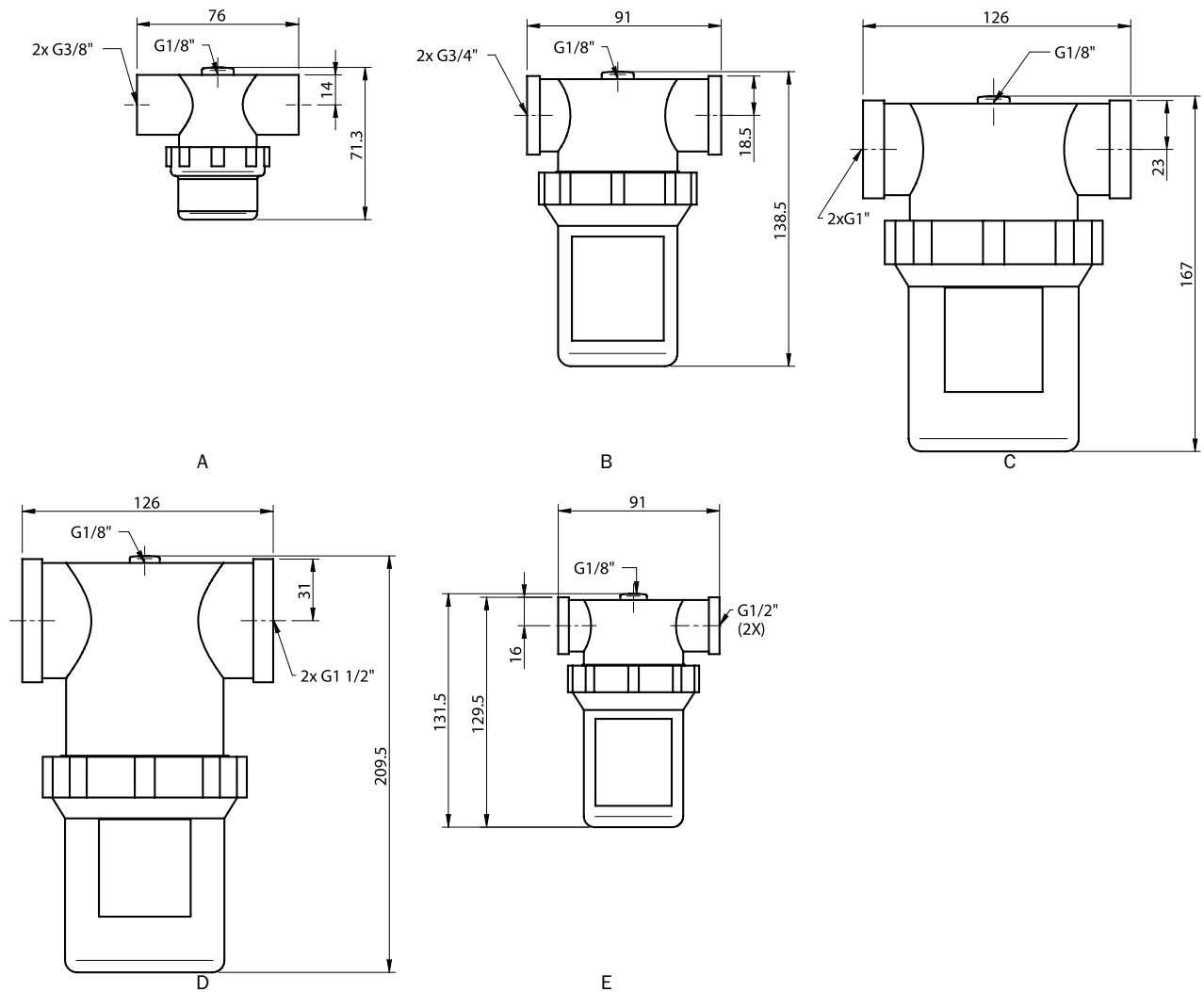
Description	Unit	Value
Pressure range	MPa	-0.1–0 MPa
Material		PE, PP, PA
Temperature range	°C	-20–80
Removal efficiency	µm	10

TECHNICAL DATA, SPECIFIC

Description	Unit	Value				
		3116671	3116651	3116652	3116672	3116653
Weight	g	70	168	170	424	550
Flow nominal	l/s	2.5	15	15	42	85
Volume Internal	cm ³	45	195	205	495	675
Filter area	m ²	0.003	0.010	0.010	0.019	0.023

ORDERING INFORMATION

	Description	Art. No.
A	Vacuum filter G3/8"	3116671
B	Vacuum filter G3/4"	3116652
C	Vacuum filter G1"	3116672
D	Vacuum filter G1½"	3116653
E	Vacuum filter G1/2"	3116651
E	Vacuum filter G1/2" (special)	0110521
B	Vacuum filter G3/4" (special)	0110522
D	Vacuum filter G1 1/2" (special)	0110523



TECHNICAL DATA, ACCESSORIES

Description	Unit	Value					
		3116673	3116674	3116675	3116676	3116223	3116224
Weight	g	7	26	50	74	80	144
Filter area	m ²	0.003	0.010	0.019	0.023	0.028	0.074
Removal efficiency	µm	10	10	10	10	5	5

ORDERING INFORMATION, ACCESSORIES

Description	Art. No.
Filter element 3/8"	3116673
Filter element 1/2" & 3/4"	3116674
Filter element 1"	3116675
Filter element 1½"	3116676
Filter element 1/2" & 3/4" (special)	3116223
Filter element 1½" (special)	3116224